

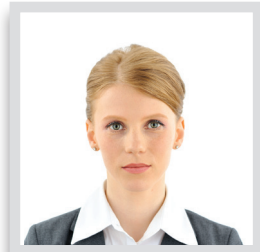
Digital Photo Guidelines

Visa photographs must meet specific requirements. Check your visa application kit to ensure that your photos meet the specific requirements for your particular application.

Before you submit, ensure that your photos meet these minimum standards. The photos should:

- Be in colour and free of shadows
- Be taken against a white background unless directed otherwise
- Have been taken in the last six months
- Show the applicant looking directly into the camera, facing-forward and with head straight
- Have eyes open, pupils and irises visible
- Have a neutral expression when required, otherwise a natural smile is acceptable
- Not display hats, uniforms or head covering except for religious purposes

Examples of acceptable photos



FREQUENTLY ASKED QUESTIONS

Can eyeglasses be worn for the photo?

In most cases, eyeglasses worn on a daily basis can be worn for the photo. However, there should be no reflections from the eyeglasses that obscure the eyes. Glare can be avoided with a slight downward tilt of the glasses or by removing the glasses or by turning off the camera flash.

Can I use a digital camera to take my photo?

Yes, you can use a digital camera. Most web-cams and mobile phones cannot provide images of sufficient quality. See other side for instructions on taking your own photo.

Is it acceptable for my child's eyes to be closed in his/her photo?

It is acceptable if an infant's eyes, particularly a newborn's, are not, or are not entirely, open. All other children must have their eyes open and looking straight ahead towards the camera.



For detailed examples of acceptable (and unacceptable) photos, visit <https://www.passports.gov.au/web/requirements/photos.aspx>

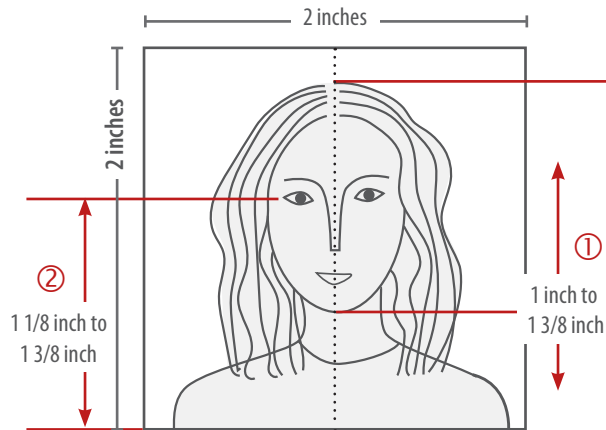
Taking Your Own Photo

PHOTO GUIDELINES

Photos should be

- In sharp focus with no visible pixels
- Reproduce color accurately
- Subject should fit in the frame as shown on the right
- Properly exposed with no shadows

Composition Template



① Height of the head (top of hair to bottom of chin) should be 1 inch to 1 3/8 inches (25 mm - 35 mm)

② Eye height should be between 1 1/8 inches to 1 3/8 inches (28 mm - 35 mm) from the bottom of the photo

Setting Up the Shot

Photo should include shoulders and plenty of space above the head



Turn off overhead lighting to eliminate shadows

Stand against a white or off-white wall

Stand close to wall to minimize shadows

Photographer should stand at least 4 feet (1.5 meters) from subject